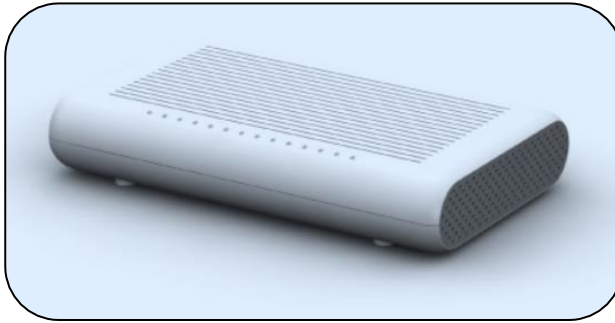




## G.fast Wi-Fi

### Broadband Router



#### Features

- G.fast chipset (Sckipio DP3000, CP1000)
- 1 Gbps over copper wiring up to 250 meters (Modular Frequency from 23-106 MHz of bandwidth)
- Coexistent with legacy XDSL
- Flexible asymmetry up/down link ratio
- Optimized performance with vectoring standard
- Time division instead of frequency division
- Robust, optical fiber level quality; significantly lower cost versus FTTH
- Customer self-install, faster roll-out, and no customer visit coordination
- Optional reverse power feature
- Support 512 PON classification rules (optional for residential gateway (R.G.))
- Layer 3/4 Hardware NAT/NAPT w/8 Network interface table (optional for R.G.)
- Built-in IEEE 802.11n + 11ac DBDC Wi-Fi (optional for R.G.)
- Built-in PLC (optional for R.G.)

To find out more, please contact: