

## Overview of brackets for mounting in 19" rack

- Flat 1U for three LGX Boxes



1U flat bracket for three LGX boxes

- Deepened 1U for three LGX Boxes



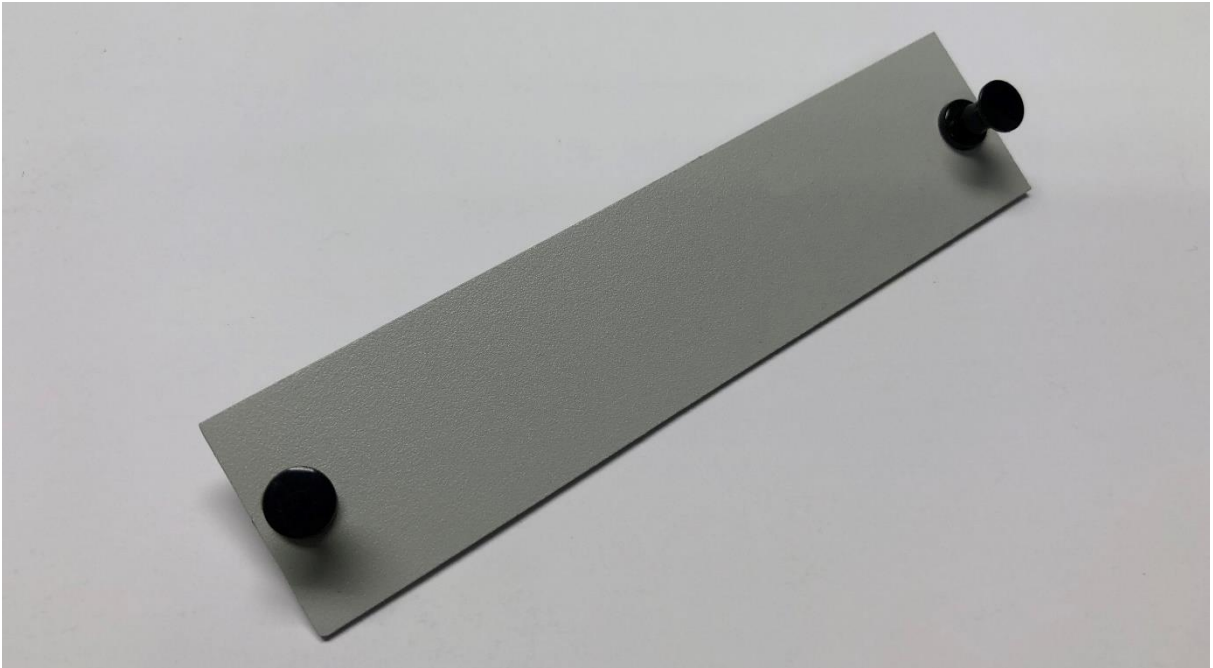
1U deepened bracket for three LGX boxes with cable relieves and backrest

- Deepened 2U for three 2H LGX boxes



2U deepened bracket for three 2H LGX boxes with cable relieves

- **Blind plate**



Blind plate (cover plate) for covering unused holes in brackets

- **3U for 14 LGX boxes**



3U flat bracket for 14 LGX boxes

## Ordering information

Part number	Product Description
08-02-20000	2U deepened bracket for six 1H or three 2H LGX boxes with cable relieves
08-02-30100	1U deepened bracket for three LGX boxes with cable relieves and backrest
1U19CWDM-PL	1U flat bracket for three LGX boxes
08-02-5000	Cover plate for LGX housing bracket
08-02-6000	3U flat bracket for 14 LGX boxes

### Notes

<sup>1</sup> For accurate order specification please contact XenOpt reseller before placing an order. The content of this document is subject to change without notice.

### Important Notice

Performance figures, data and any illustrative material provided in this data sheet are typical and must be specifically confirmed in writing by XenOpt before they become applicable to any particular order or contract. In accordance with the XenOpt policy of continuous improvement specifications may change without notice.

The publication of information in this data sheet does not imply freedom from patent or other protective rights of XenOpt or others. Further details are available from any XenOpt sales representative.

To find out more, please contact:



[www.xenopt.com](http://www.xenopt.com)